

Montana High Country

LUXURY FIFTH WHEELS

UPGRADE YOUR ADVENTURE



WARRANTY FOR
FULL TIME RVING*

*REFERENCE KEYSTONE RV COMPANY OWNERS MANUAL FOR LIMITED WARRANTY DETAILS



**Keystone RV
Company**

The ultimate ownership experience.

The goal of Keystone RV Company is to surprise and delight our owners at each and every touchpoint. We're happy when our campers are happy, and we are committed to providing the very best ownership experience in the industry.



**Keystone RV
Company**

1 EASIER SHOPPING.

At Keystone, we make choosing an RV as easy as finding the Big Dipper on a dark summer night. With comprehensive online product information, Key Connect™ product advisors, and an unparalleled dealer network, we will help you select the perfect RV for your family's adventure.

2 INNOVATIVE THINKING.

The road's a nicer place when you have the industry's smartest features behind you. Keystone leads the pack in patented innovations that make our RVs safer, more comfortable, and easier to operate.

3 LONG HAUL QUALITY.

To keep you on the road, there are certain things we just won't build a Keystone RV without. Game-changing features like our Unified Wiring Standard, Tru-Fit™ five-point slide construction, and no-fail Tuf-Lok™ A/C duct joiners combined with exhaustive testing and inspections are some of the reasons why Keystone is able to offer our owners the industry's best 3-year limited structural warranty.

4 WORRY-FREE CUSTOMER SERVICE.

Wherever the road takes you, you're never too far from an authorized Keystone service center. We also offer live service assistance, ultra-fast parts shipping, online maintenance tips and tricks, and a single-point warranty claims policy. *That's* peace of mind.

5 KEYSTONE NATION.

When you choose Keystone, you become a part of one of the largest camping families in the country. We're Keystone Nation. A friendly community where people share photos, travel tips and amazing stories – all in the spirit of camaraderie and adventure. Come join us.

Experience the Montana lifestyle by visiting [#keystonemontanahighcountry](#)



Keystone EXCLUSIVE Innovations

Year after year, Keystone RV's experienced team delivers Built For the Long Haul quality you expect and exclusive innovations you won't find anywhere else.



3-year Limited Structural Warranty, 1-year Limited Base Warranty

Every new Keystone RV comes with the industry's best three-year limited structural warranty AND a one-year limited base warranty. Ask your dealer, visit keystonerv.com, or call Keystone owner relations for details.



4G LTE and Wi-Fi Prep

All units are equipped with a new Furrion® antenna that integrates 4G LTE and Wi-Fi with standard VHF/UHF/AM/FM reception.



KeyTV™

No more connection guesswork or poor reception. KeyTV offers a game-changing, single point of control of over-the-air, cable, and satellite feeds. Visit us online for more information.



Color-Coded Wiring

Easy-to-trace circuits simplify electrical and entertainment system troubleshooting.



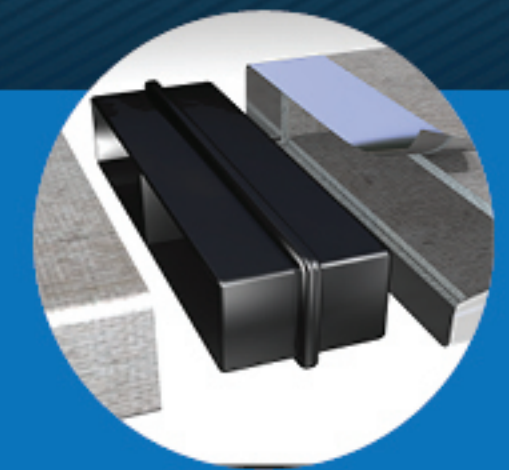
Automotive-Grade Painted Fiberglass Cap

Six layers of stunning and resilient automotive-grade paint with Key-Shield™ paint technology.



In-Floor Heating Ducts

Ducting allows for more airflow that distributes heat evenly for optimal comfort.



Tuf-Lok™ A/C Duct Joiners

Crush resistant design securely joins ductwork and A/C units, and drastically reduces chilled-air leaks to boost cooling efficiency and comfort.



Tru-Fit™ Slide Construction

A more durable slide room design that minimizes functional motor and structural stress, and resists leaking.

MONTANA HIGH COUNTRY



MONTANA HIGH COUNTRY | LUXURY FIFTH WHEELS

Montana High Country takes adventure to new limits

Built on the legacy of the Montana brand, Keystone's Montana High Country fifth wheels deliver the quality construction and premium appointments you expect from Montana in a more agile, family-focused lineup. Most High Country floorplans are $\frac{3}{4}$ -ton towable and each is designed with the practical luxury that active RVers are looking for—features like chef-friendly kitchens with residential appliances, king size beds, double-vanity bathrooms, and ceiling fans. Get ready to upgrade your adventure with Montana High Country.

For more information, please visit keystonerv.com/montana-high-country

WARRANTY FOR
FULL TIME RVING*

*REFERENCE KEYSTONE RV COMPANY OWNERS MANUAL FOR LIMITED WARRANTY DETAILS



OVER 100K MONTANA FIFTH WHEELS
ON THE ROAD TODAY



ONE OF THE MOST AWARDED BRANDS IN THE INDUSTRY

#1 SELLING LUXURY FIFTH WHEEL BRAND 18 YEARS IN A ROW.



more product detail at
www.keystonerv.com/montana-high-country

- More than 100,000 Montana fifth wheels on the road today
- Dual 15k air conditioner system, w/ heat pump on main A/C
- QuietCool® ducting system on living room air conditioner
- Seamless fiberglass shower with seat
- 4-point or 6-point auto-leveling system
- Backup taillights provide additional safety and security
- Drop-frame construction provides oversized exterior storage
- Easy-to-clean upgraded roller shades w/ quiet operation
- Power reclining theater seating with USB port
- F-range tires with 6-year warranty and Tredit Advantage Roadside Assistance Program
- Motion-activated lights at interior step & switch panel
- Wardrobe closet prepped for a stackable washer & dryer
- Residential bathroom vanity with seamless countertop, under-mounted sink, single lever faucet and storage drawers
- Extra large 30" wide x 78" tall exterior main entry door
- Kitchen power vent with wall controls and rain sensor

Drop-Frame Construction

Huge Pass Through Storage

Unique frame design allows for expanded, unobstructed pass through storage and oversized baggage doors.

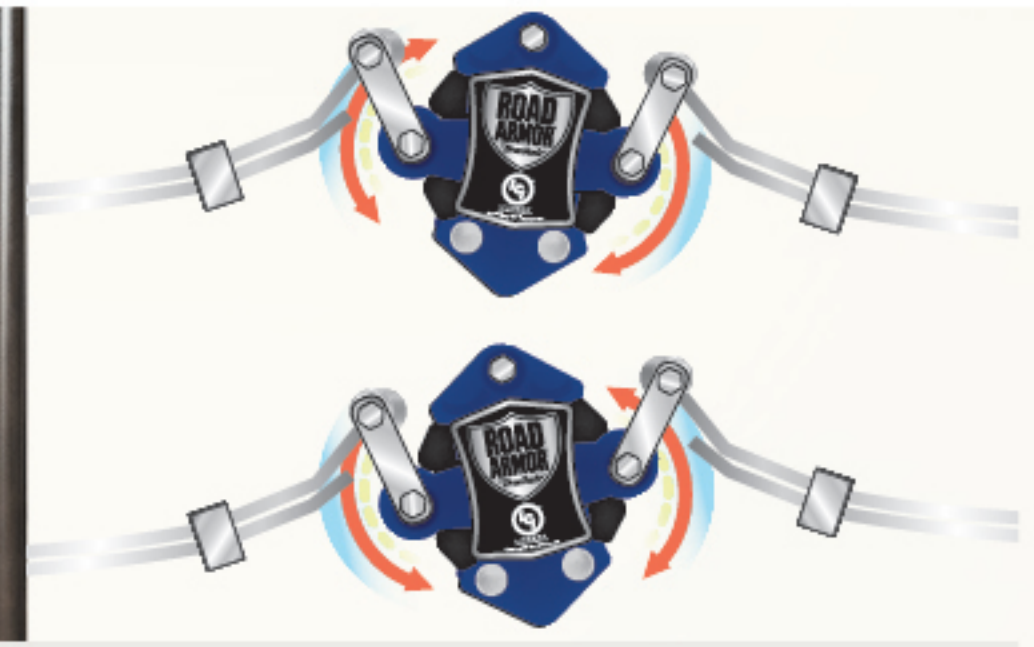




Power Reclining Theater Seating w/ USB Ports
Ultra-stylish reclining furniture with cup holders and USB charging station.



30" Stainless Steel Microwave
Full-sized microwave makes it easy to transition from home cooking to campsite cooking.



Road Armor™ Suspension w/ 360° Vibration Control
Equalizes axle load to dampen shock and vibration. (TrailAir on 380/381TH models.)



MORRyde® StepAbove™
Ultra-safe and secure main entry with strut assist.



Seamless 48" x 30" Fiberglass Shower
Life-sized, durable and easy-to-clean.



Residential Bathroom Vanity
Seamless countertops, undermount sinks and double vanities in many floorplans.



21" Furrion® Stainless Steel 2-in-1 Range Oven
Chef-inspired appliances with the perfect blend of performance, precision and style.



Performance-enhancing Aluminum Rims
8 lug, aluminum rims rated at 110 PSI and approved for G-range tires.



Easy Sweep Resilient Flooring
Keep your RV tidy with durable vinyl flooring in the bedroom.



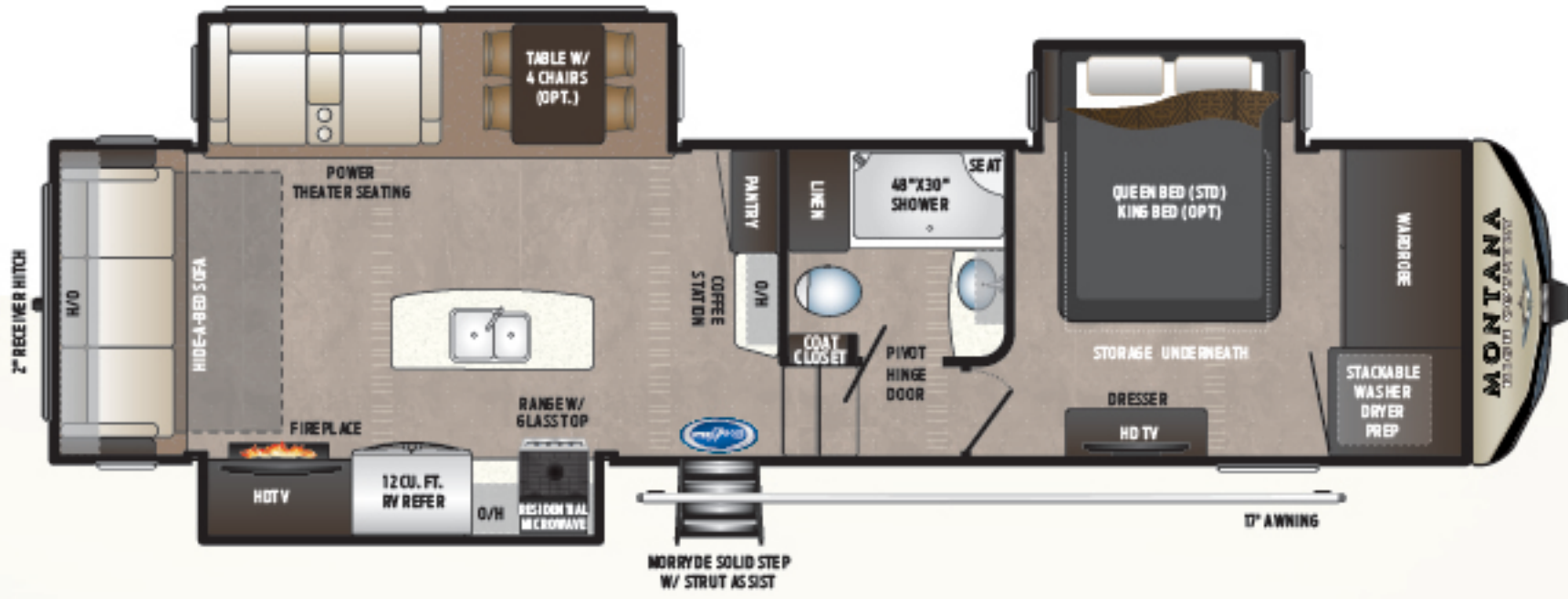
Entertainment Center with Furrion® Components
A single remote controls a HDTV, stereo with CD/AM/FM with Bluetooth, DVD and a 34" fireplace.



Furrion Bedroom Television
720p high-definition, ultra-slim LED television with Vibrationsmart™ and Climatesmart™ technologies



Zero-degree Tested and Rated
Camp to 0°F without water lines or tanks freezing.



305RL | Rear living room, three slides
RV REFRIGERATOR | Weight: 10662 LBS. | Length: 34' 3"



310RE | Rear living room, three slides
RV REFRIGERATOR | Weight: 10662 LBS. | Length: 34' 3"



320/321MK | Middle kitchen w/ rear desk, three slides
RV REFRIGERATOR | RES. REFRIGERATOR | Weight: 11085 LBS. | Length: 36' 1"



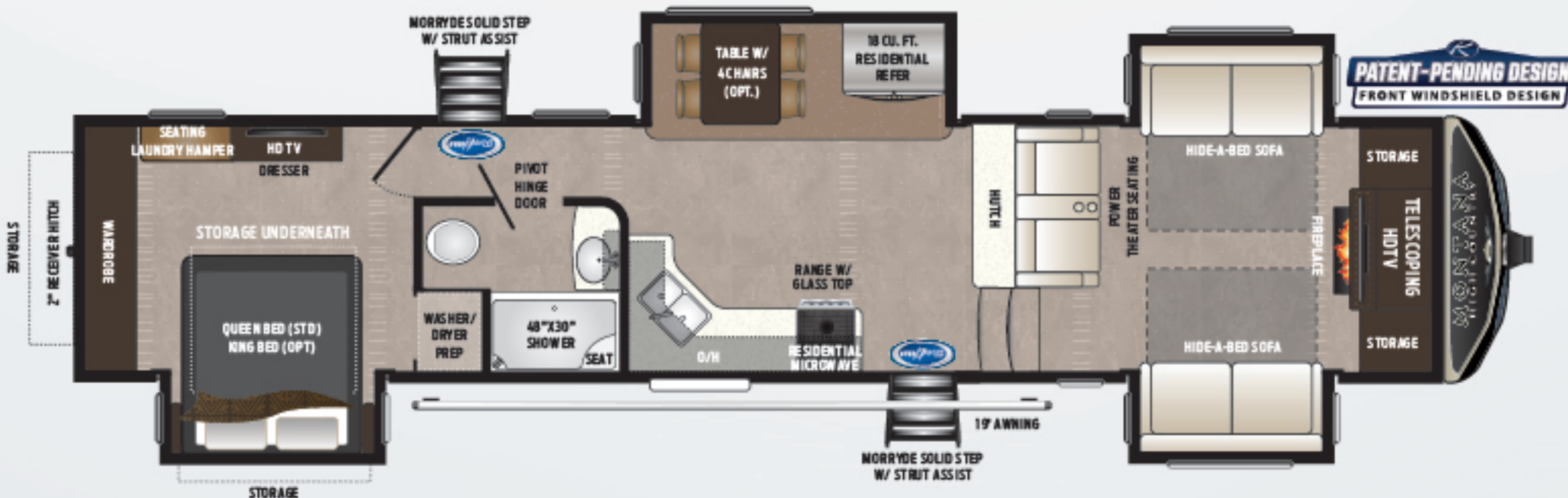
330/331RL | Rear living room, three slides
RV REFRIGERATOR | RES. REFRIGERATOR | Weight: 11085 LBS. | Length: 36' 1"



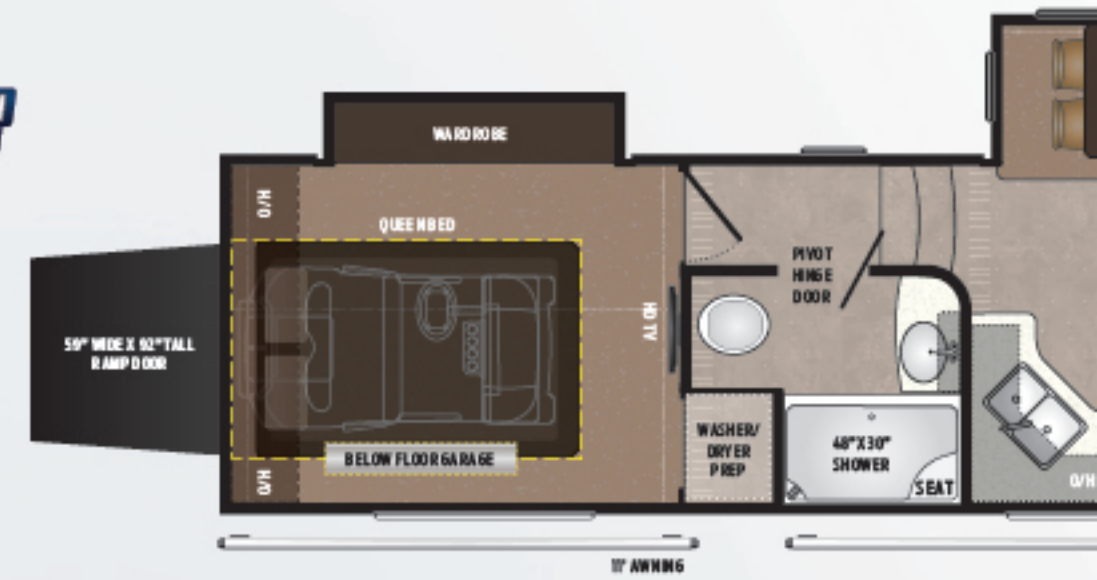
362RD | Rear den or rear bunkhouse
RV REFRIGERATOR | Weight: 12982 LBS. | Length: 40' 1"



364/365BH | Bunkhouse
RV REFRIGERATOR | RES. REFRIGERATOR | Weight: 12982 LBS. | Length: 40' 1"



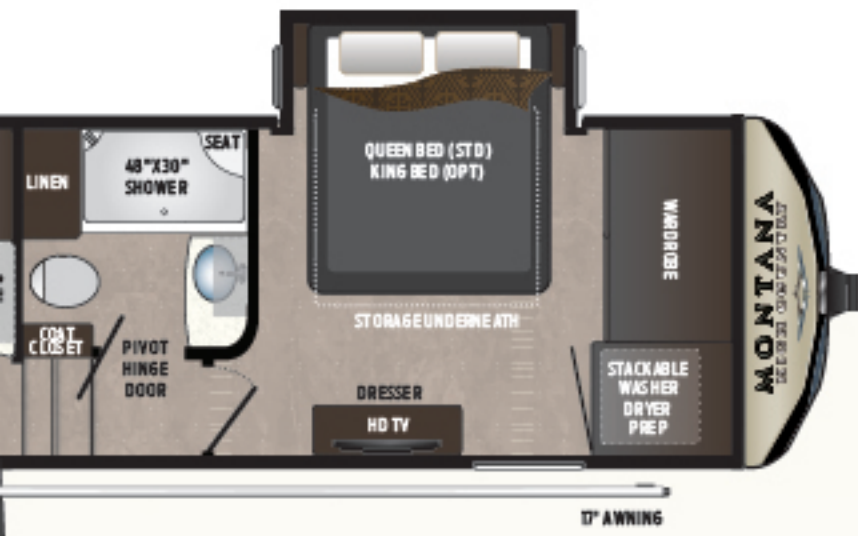
374/375FL | Front living room, three slides
RV REFRIGERATOR | RES. REFRIGERATOR | Weight: 12318 LBS. | Length: 41' 6"



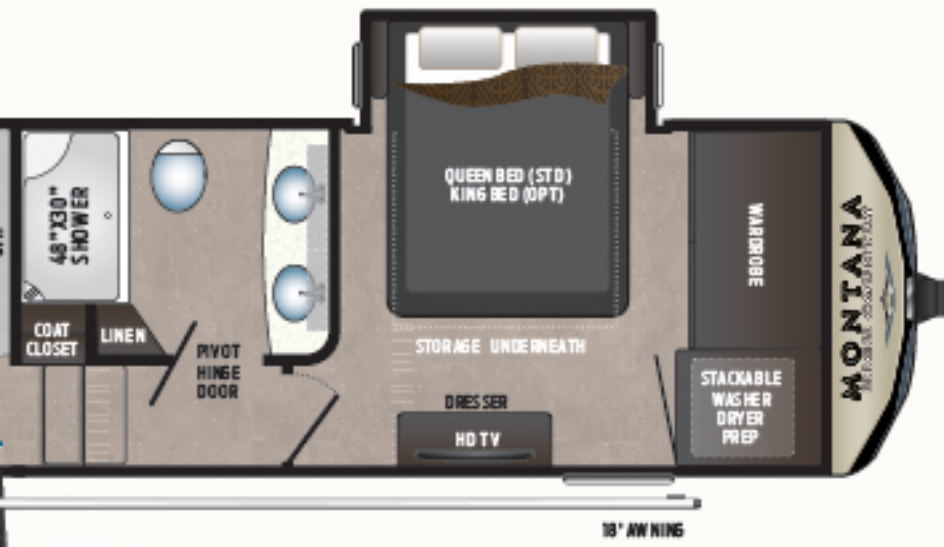
380/381TH | Front living room, three slides
RV REFRIGERATOR | RES. REFRIGERATOR | Weight: 12318 LBS. | Length: 41' 6"

Montana High Country

FLOOR PLANS



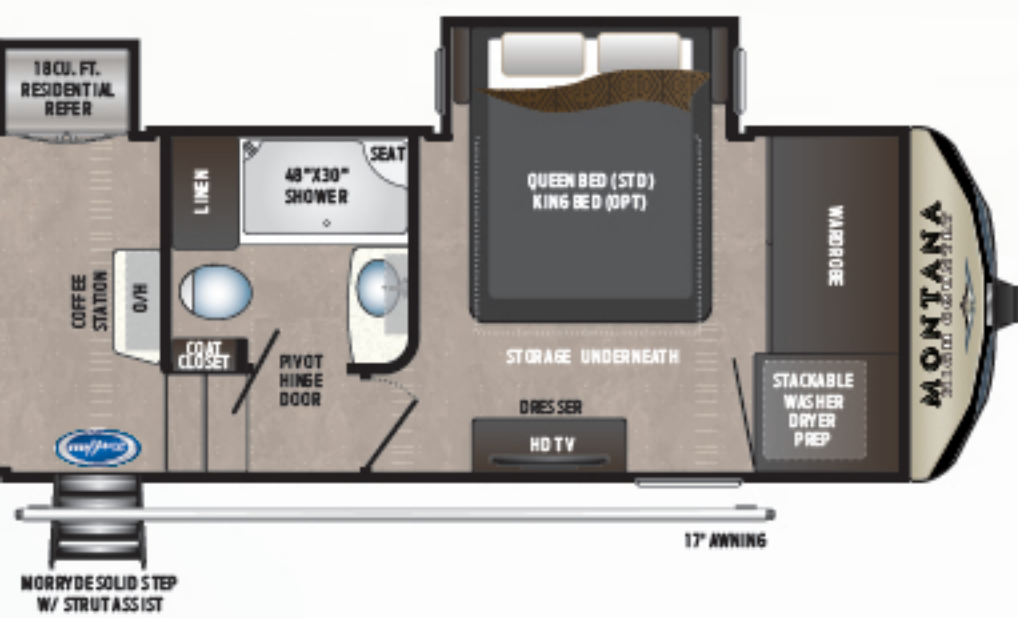
entertainment, three slides
Weight: 10717 LBS. | Length: 34' 0"



Living room, bathroom with double vanity
Weight: 11243 LBS. | Length: 37' 4"



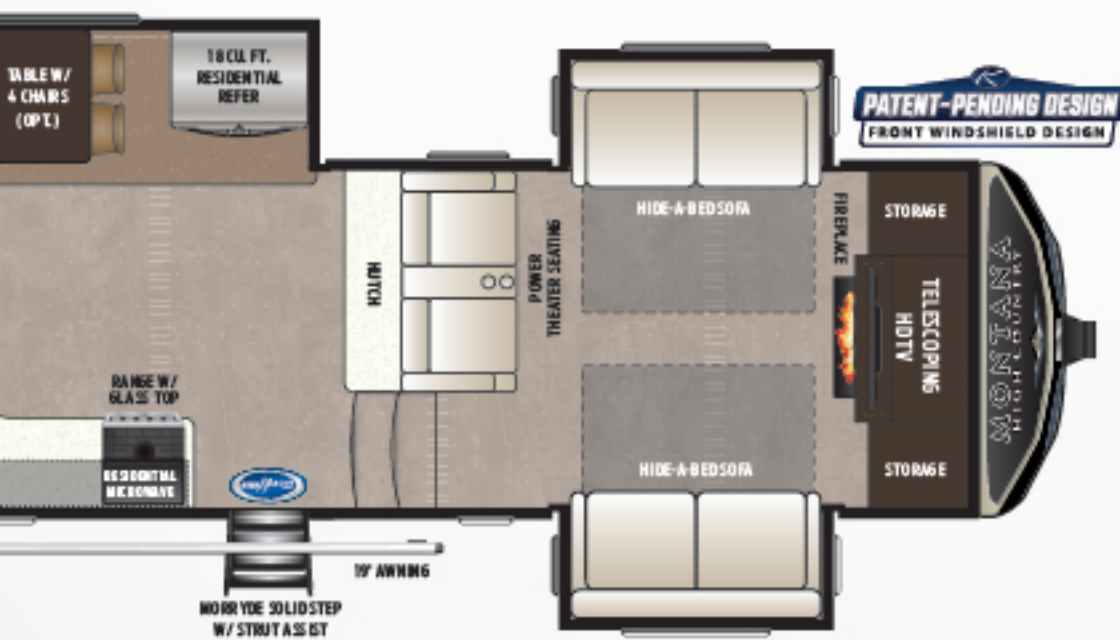
344/345RL | Rear living room w/ outside kitchen
RV REFRIGERATOR RES. REFRIGERATOR | Weight: 11501 LBS. | Length: 36' 4"



Living room w/ full bath, half bath, outside kitchen
Weight: 12635 LBS. | Length: 40' 11"



372/373RD | Elevated rear den w/ pull-out rear storage
RV REFRIGERATOR RES. REFRIGERATOR | Weight: 12800 LBS. | Length: 41' 4"



Living room w/ rear garage and ramp door
Weight: 13345 LBS. | Length: 41' 6"



384/385BR | Bonus room w/ loft and outside kitchen
RV REFRIGERATOR RES. REFRIGERATOR | Weight: 12860 LBS. | Length: 40' 8"



more product detail at
www.keystonerv.com/montana-high-country



Substance and Style

Montana High Country's spacious interiors, thoughtful built-in workspace, and abundant counter and storage space make these coaches an easy choice for families, couples who work on the road, and extended-stay campers. While these functional aspects are appealing, it's the interior design that will captivate you. Developed to appeal to design enthusiasts, the aesthetic is modern and fresh with elevated textural details—two-toned kitchen cabinetry, including a dark shiplap island offset with bright white countertops, glass front cabinets, white subway tile backsplash, and a white shiplap headboard are just some of the unexpected and delightful touches that inspire you to come home to Montana High Country.



On The Bright Side

Taller slide boxes and panoramic windows are designed to let in an abundance of natural light.



Fit For A King

All of the comforts of home with walk-around beds and spacious wardrobes.





more product detail at
www.keystonerv.com/montana-high-country



#1 SELLING LUXURY FIFTH WHEEL BRAND 18 YEARS IN A ROW.



Small Conveniences

Charge your phone while you sleep with USB ports located next to nightstands in the bedroom.



Unexpected Touches

From built-in wine racks to cozy fireplaces, Montana High Country is loaded with details designed to delight.



MODEL	WEIGHT	CARRYING CAPACITY	HITCH WEIGHT	FRESH WATER	WASTE WATER	GRAY WATER	LPG	LENGTH*	HEIGHT
305RL	10662	3638	2395	66	49	98	60	34' 3"	13' 4"
310RE	10717	3483	2280	66	49	88	60	34'	13' 4"
320/321MK	11085	3075	2160	66	49	98	60	36' 1"	13' 4"
330/331RL	11243	3017	2265	66	49	98	60	37' 4"	13' 4"
344/345RL	11501	2699	2235	66	49	98	60	36' 4"	13' 4"
362RD	12982	3018	2885	66	88	98	60	40' 1"	13' 4"
364/ 365BH	12635	3365	2730	66	88	98	60	40' 11"	13' 4"
372/373RD	12800	3200	2530	66	49	88	60	41' 4"	13' 4"
374/375FL	12318	3182	2595	66	39	78	60	41' 6"	13' 4"
380/381TH	13345	3655	3265	66	39	78	60	41' 6"	13' 4"
384/385BR	12860	3640	2660	66	49	88	60	40' 8"	13' 4"

LIVING AREA FEATURES	
Brushed nickel cabinet hardware	●
Solid hardwood slide-out fascia	●
6' 6" tall main slide-outs	●
Ceiling crown molding	●
Shaw carpet with R2X protection	●
Beauflor flooring with 7-year cold cracking warranty	●
Flush mounted LED interior lights	◆
Roller Shades	◆
Tri-fold hide-a-bed sofa	◆
Theater seating with power recliners and USB port	◆
LED motion sensor light at steps and switch panel	●
KITCHEN FEATURES	
Island countertop accent lighting	●
12 cu. ft. 4 door RV refrigerator (mandatory): select models	●
French door residential refrigerator w/ ice maker and 1000 watt inverter (Mandatory): select models	●
Full extension drawer guides	●
Pull out kitchen trash can (select models)	●
Subway tile backsplash	●
Solid surface kitchen countertop	◆
Solid surface flush mount sink covers	◆
Sink cover storage below kitchen sink	◆
Deep 60/40 stainless steel sink	◆
High-rise faucet with integrated pull-out sprayer	◆
30" over-the-range microwave	◆
Furrion® 21" 2 in 1 stainless steel cooktop and oven with triple glass door	◆
Glass bifold range cover	◆
Booth dinette with easy-lift seats	◆
Motion sensor LED light in pantry (select models)	◆
Power vent fan with rain sensor & wall controls	●

HOME ENTERTAINMENT	
Climatesmart™ & Vibrationsmart™ Furrion Studio Collection with Single Remote Control - DV3300 AM/FM/CD/DVD Player with App Control & Bluetooth - Studio Speakers	●
Marine grade exterior speakers	●
KeyTV™ satellite prep	◆
Exclusive Furrion Omnidirectional Rooftop Antenna with 4G LTE / Wi-Fi Prep	◆
HD LED TV with Climatesmart™ & Vibrationsmart™, living room	◆
HD LED TV with Climatesmart™ & Vibrationsmart™, master bedroom	◆
BEDROOM FEATURES	
"Easy Sweep" master bedrooms (n/a 380/381TH)	●
"Easy-Sweep" vinyl flooring ipo carpet	●
60" x 80" Queen Bed	●
Shiplap design headboard	●
Reading lights over bed	●
Massive storage under bed	●
Wood TV cabinet	●
High density foam mattress	◆
Bedside USB charging station	◆
Bedside nightstands	◆
Prepped for combo or stackable washer/dryer with separate 20AMP circuits for each appliance	◆
Magnetic bedroom door holder	◆
Motion sensor LED light in bedroom closet	◆
Four (4) drawer large size dresser	●
BATHROOM FEATURES	
Skylight over shower	●
12-gallon DSI gas/electric water heater with 16.2 GPH fast recovery	●
Undermount sink	●
Seamless countertop	●
Three (3) drawers (1) door vanity	●
Brushed nickel shower head and faucet	●
Seamless 48" x 30" fiberglass shower w/ seat	◆

DISCLAIMER: Product information is as accurate as possible as of the date of publication of this brochure. All features, floor plans, and specifications in this brochure are subject to change without notice. Please also consult Keystone's web site at www.keystonerv.com for more current product information and specifications. Tow Vehicle Disclaimer. CAUTION: Owners of Keystone recreational vehicles are solely responsible for the selection and proper use of tow vehicles. All customers should consult with a motor vehicle manufacturer or their dealer concerning the purchase and use of suitable tow vehicles for Keystone products. Keystone disclaims any liability or damages suffered as a result of the selection, operation, use or misuse of a tow vehicle. KEYSTONE'S LIMITED WARRANTY DOES NOT COVER DAMAGE TO THE RECREATIONAL VEHICLE OR THE TOW VEHICLE AS A RESULT OF THE SELECTION, OPERATION, USE OR MISUSE OF THE TOW VEHICLE. *Length is defined as the distance from the centerline of hitch pin/coupler to rear bumper of trailer. Please review owner's manual prior to purchase for more information on service warranties, extended use, towing and maintenance. Owner's manuals can be found at keystonerv.com.

BATHROOM FEATURES (cont.)	
Porcelain foot-flush toilet	◆
50 AMP service	◆
60 AMP converter with charge wizard technology	◆
CONSTRUCTION FEATURES	
Unified wiring standard: each wire color-coded and numbered	●
Roof rafters	●
Welded aluminum framed walls and floors	●
Laminated sidewalls with dual layered luan and metal backing strips to anchor interior cabinets	●
Seamless 5/8" thick floor decking	●
Powder coated 10" steel I-beam frame (305, 310, 320, 321, 344, 345, 330, 331)	●
Powder coated 12" steel I-beam frame (362, 364, 365, 372, 373, 374, 375, 380, 381, 384, 385)	●
Seamless roto-cast holding tanks	●
Double insulated rear wall	●
FOUR SEASONS FEATURES	
35,000 BTU Furnace	■
3"x14" in-floor straight line heat duct system	■
15,000 BTU ducted air conditioner, bedroom	■
15,000 BTU Whisper Quiet main air conditioner system, living room	■
16,500 BTU heat pump on main air conditioner	■
Tested and approved for 0 degree usage	■
Two attic vents for cross ventilation	■
R-38 equivalent insulated roof	■
R-21 equivalent insulated floor	■
R-15 equivalent insulated slide out floors	■
R-11 equivalent insulated sidewalls	■
Insulated and heated holding tanks and dump valves	■
Enclosed and heated low point drains	■
12V electric tank heaters, all tanks	■
Ceiling fan (n/a 372rd, 373rd)	■
34" Led fireplace that can heat 500 sq. ft. (5100 BTU)	■
TOWING FEATURES	
MaxTurn™ front cap and radius frame with Hitch Vision™	●
Hitch Vision™ Mirror	●
Road Armor™ suspension (380/381TH: Trail Air suspension)	●
Road Armor™ King Pin	●
Backup camera prep	●
F-range tires with 5-year manufacturer warranty	●
16" 8-Lug aluminum wheels (110 PSI)	●
6000 lb. Dexter® E-Z Lube® axles with self-adjusting brakes (305, 310, 320, 321, 344, 345, 330, 331)	●
7000 lb. Dexter® E-Z Lube® axles with self-adjusting brakes (362, 364, 365, 372, 373, 374, 375, 380, 381, 384, 385)	●
Backup lights	●
Under-mount spare tire and carrier	●

EXTERIOR FEATURES	
Automotive paint with two layers of clear coat on front cap	●
High-gloss gel coated sidewalls and rear wall	●
Tinted safety glass windows	●
Fold-away entry handle	●
Rear roof ladder	●
Slam latch pass-through storage compartment doors	●
Extra large (30" wide by 78" tall) entry door with friction hinge	◆
Enormous drop frame pass through-storage compartment	◆
MORryde® Step Above™ entry steps with strut assist	◆
Motion sensor LED lights in pass-through storage compartment	◆
Motion sensor LED lights in toy hauler garage	◆
LPG quick connect for accessories	●
EASY SET UP FEATURES	
Dometic® 12V electric patio awning with LED lights and power channel	●
Heated central exterior water and convenience center	●
<ul style="list-style-type: none"> · Outside shower with quick connect hose · Black tank flush · Easy winterization kit · Water heater bypass · Power tank fill · Enclosed low point drains · Battery disconnect · Cable/satellite hook-ups · 12V light · Furrion® solar charging prep 	●
OPTIONS	
Interior Options	
<ul style="list-style-type: none"> · King bed (n/a 362, 380, 381) · Power vent fan with rain sensor in bathroom · Power vent fan with rain sensor in rear bathroom (362, 364, 365) · Free standing dinette with 4 chairs 	
Exterior Options	
<ul style="list-style-type: none"> · 4 Point electric automatic leveling system, mandatory (305, 310, 320, 321, 344, 345, 330, 331) · 6 Point electric automatic leveling system, mandatory (362, 364, 365, 372, 373, 374, 375, 380, 381, 384, 385) · Dual pane frameless windows · Slide-out awnings package · Generator ready (Onan® 5.5 KW specifications) · Onan® Marquis Gold 5.5 KW LP generator · 2" Receiver Hitch, mandatory (n/a 380/381TH) 	

● -STANDARD FEATURE ◆ -RESIDENTIAL LIVING PACKAGE ■ -FOUR SEASON LIVING PACKAGE

BUILT FOR THE LONG HAUL



PRINT 1.2019



**Keystone RV
Company**